

SIEMENS

Frequency Converter



EPLAN Macros

Version 1.1

Installation und first steps



SINAMICS and MICROMASTER 4

1 Table of contents

1	Table of contents	2
2	Introduction	3
2.1	Frequency Converter Macros for EPLAN 5.70	3
2.2	News Version 1.1	3
3	Introduction of installation.....	4
3.1	Requirements:	4
3.2	Installation:	4
3.3	Configuration:	15
3.4	EPLAN Project: SIEMENS_FC_EPLAN_MACROS:	16
4	Operation instruction.....	17
4.1	Inserting macros	17
4.2	Macro structure.....	21
4.3	Macro structure cabinet	22
4.4	Workflow	23
4.5	Mounting panels equip	26
4.6	Revision of the article databases before importing.....	27

2 Introduction

2.1 Frequency Converter Macros for EPLAN 5.70

The setup assistant will install EPLAN 5.70 circuit diagram macros for the following SIEMENS product lines

MICROMASTER 4

SINAMICS G110

SINAMICS G120

including EPLAN article data and an EPLAN Project with circuit diagrams and examples.

These macros of mentioned products will support you in the construction phase.

2.2 News Version 1.1

You can choose the installation language “German” or English.

The following products are added:

SINAMICS G120 Powermodule PM250 and PM260

Accessories “Brake Relay”

The parts management contains the mounting clearance with, mounting clearance height and graphics macros for mounting panels equip.

3 Introduction of installation

3.1 Requirements:

MS Windows XP

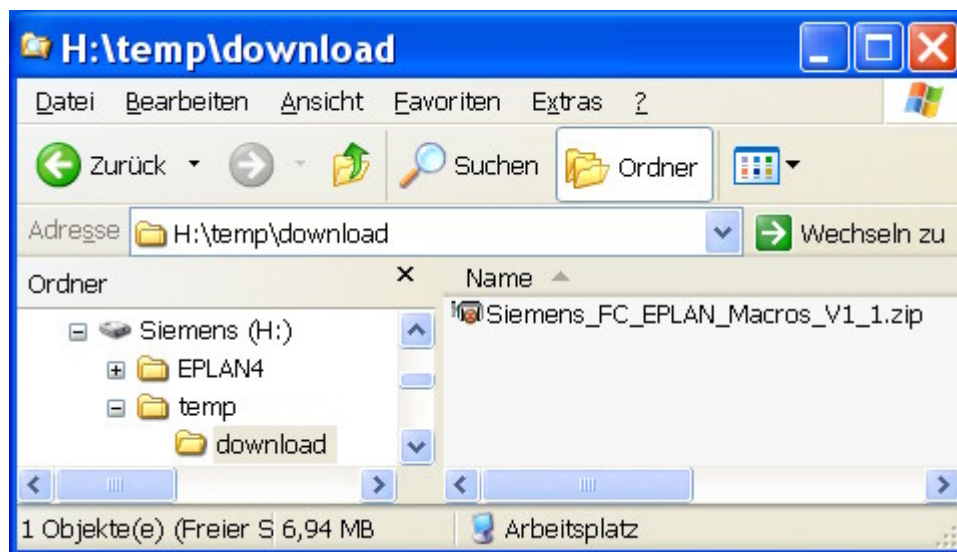
EPLAN Version 5.70

One file called "SIEMENS.ZIP".

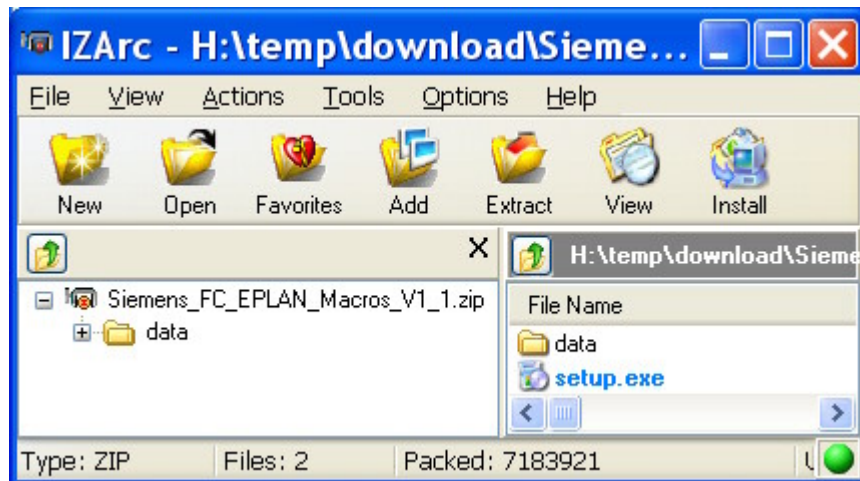
This compressed file contains all data and also the setup program.

3.2 Installation:

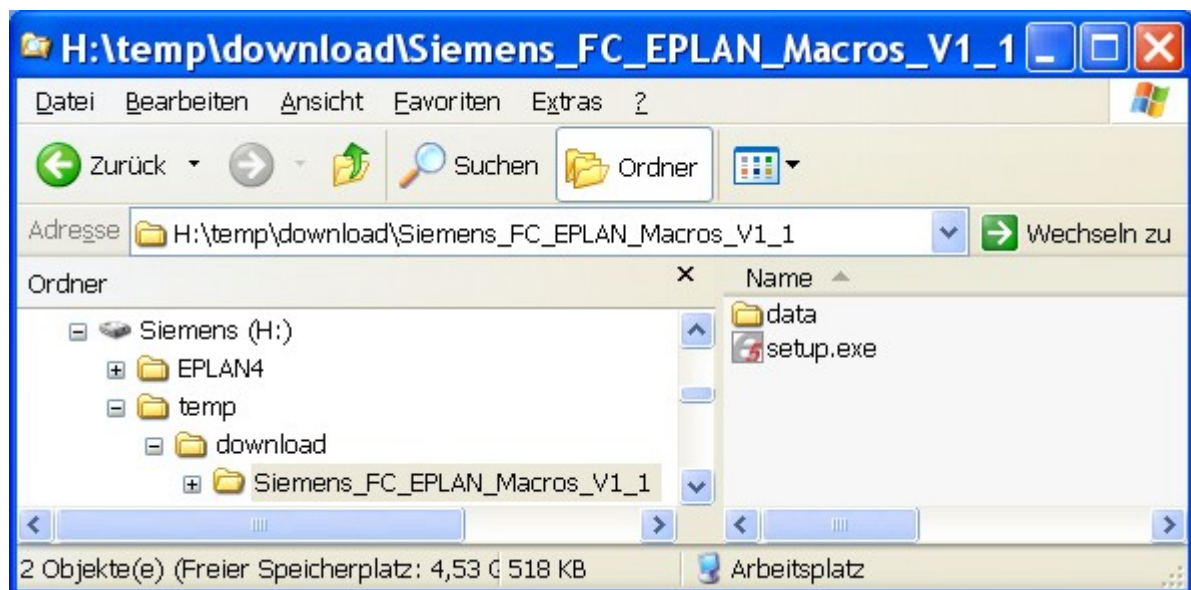
Step 1: Download



Step 2: Extract all files “SIEMENS.ZIP”



Step 3: Start setup.exe



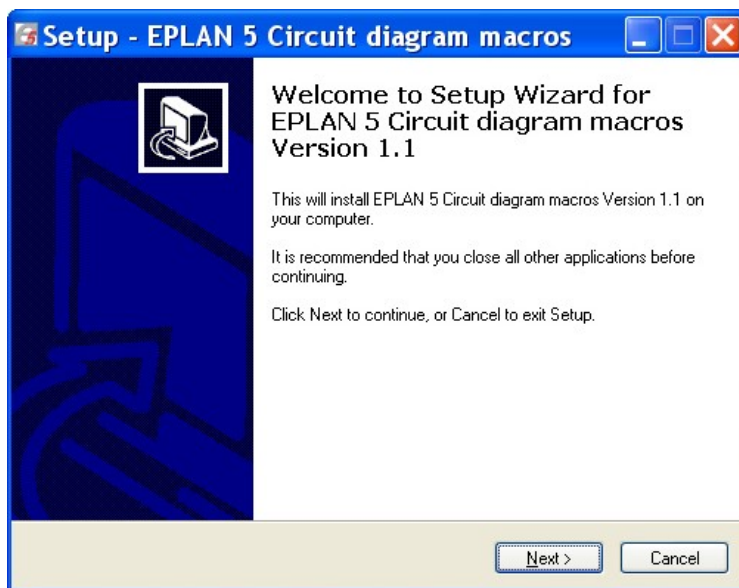
Step 4: Choose the setup language



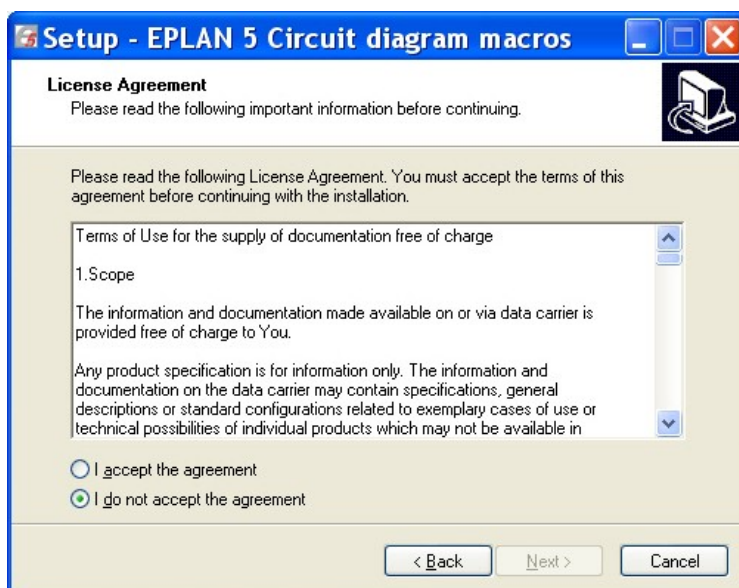
Step 5: Show product pictures



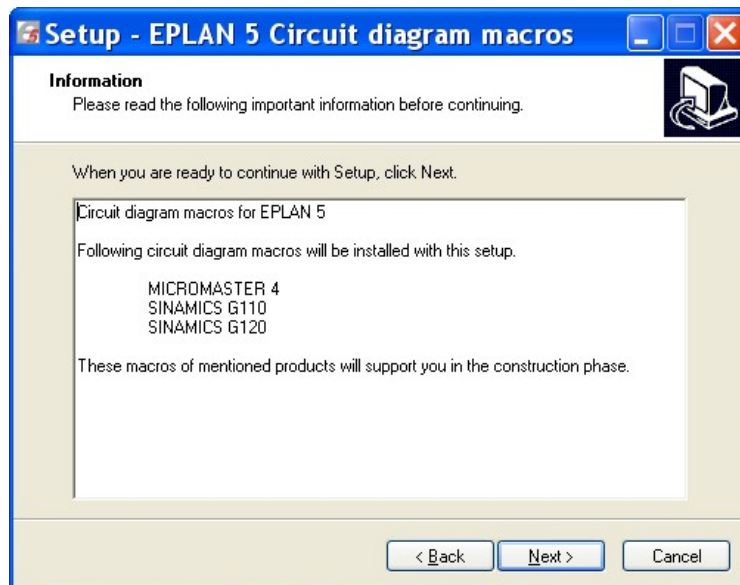
Step 6: Setup assistant



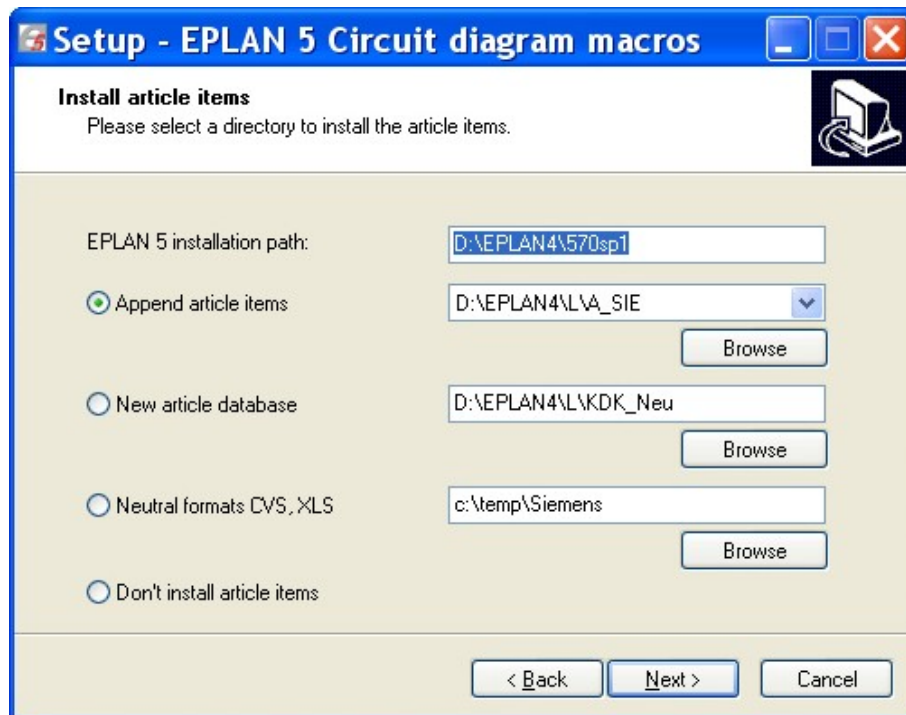
Step 7: License agreement



Step 8: Information



Step 9: Install article items



Append article items:

If more article databases exist, one database is suggested. Use "Browse" to select the article database directory (L).

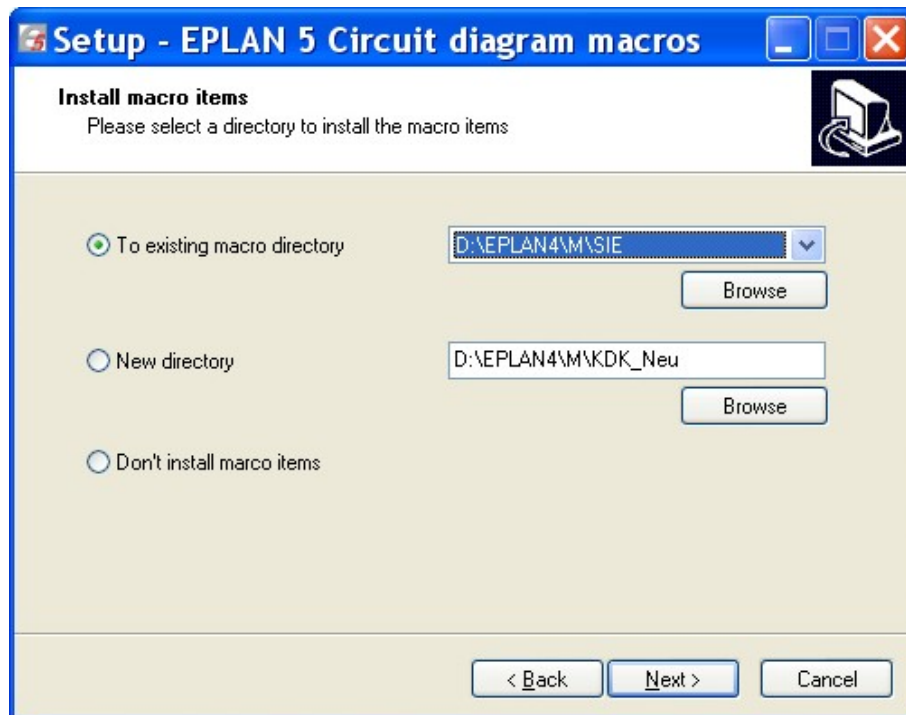
The structure of the article number is: **6SE6410-2BB11-2AA0**.

If this article number exists, the database will be updated, otherwise it will be added.

Alternatively you can create an new article database or you don't install article items.

You can also copy Excel- or CSV-Files to your "temp" directory.

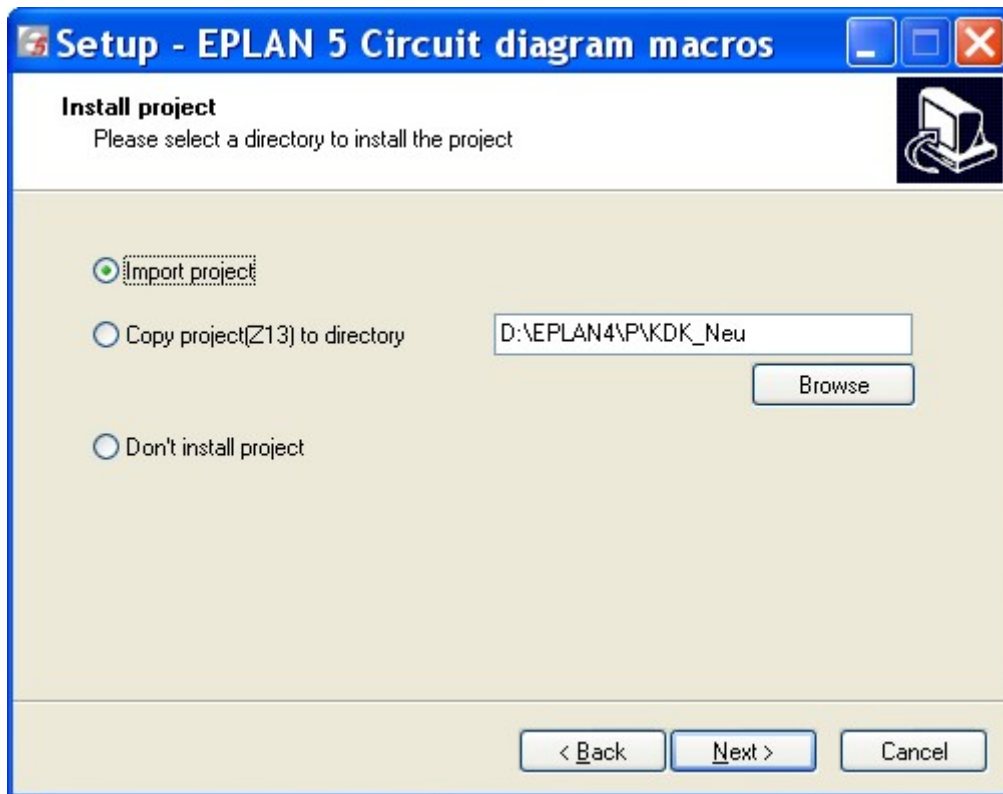
Step 10: Install macros



Install macro items

Use „Browse“ to insert a macro directory from the EPLAN directory structure (M). You can also create a new directory or don't install macro items.

Step 11: Install projects



Import project:

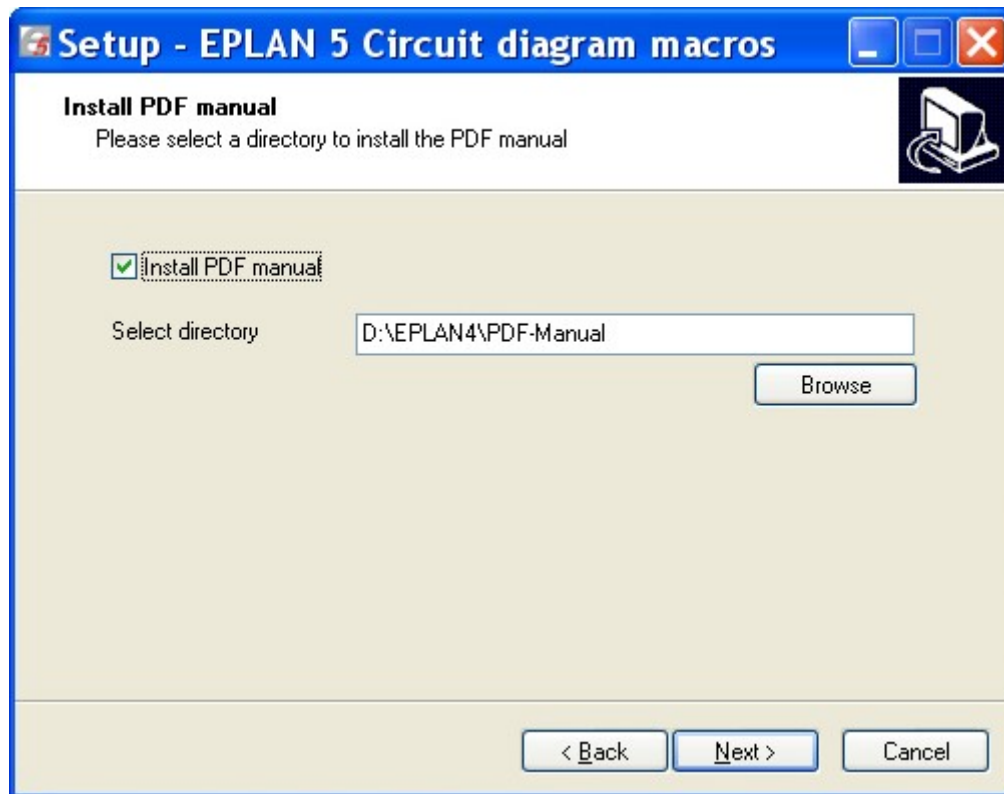
The file "SIEMENS_FC_EPLAN_MACROS" is copied to the directory Drive:\EPLAN4\SIE\..

If this project exists, this project will be overwritten.

You can also copy the *.Z13 file to any other directory.

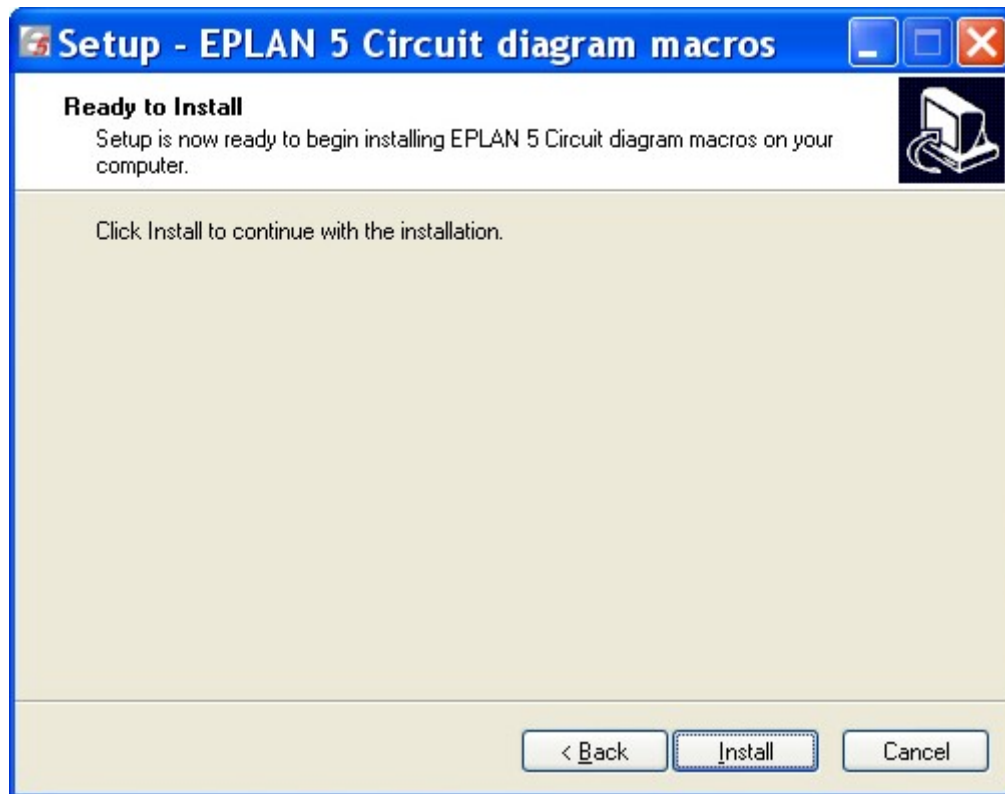
You can open this file with "double click" and copy to any other EPLAN directory (P).

Step 12: PDF instruction

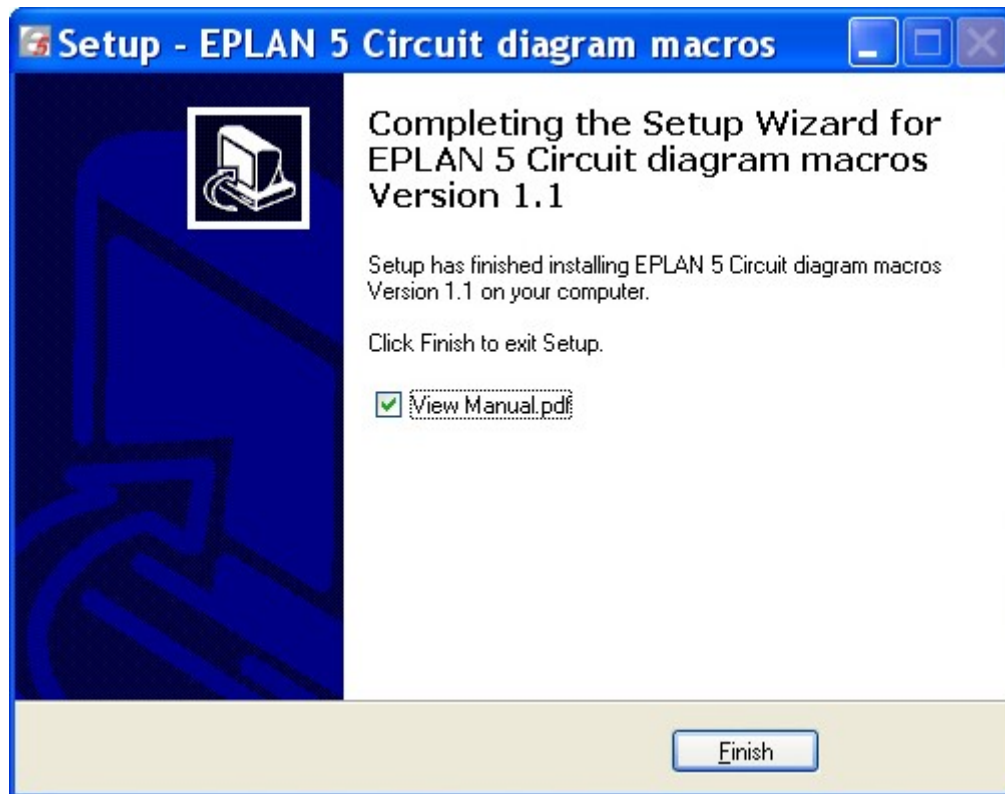


The installation instruction can be copied in an optional directory.

Step 13:Start of installation



Step 14: Completion of installation



The installation and configuration manual will be shown by request.

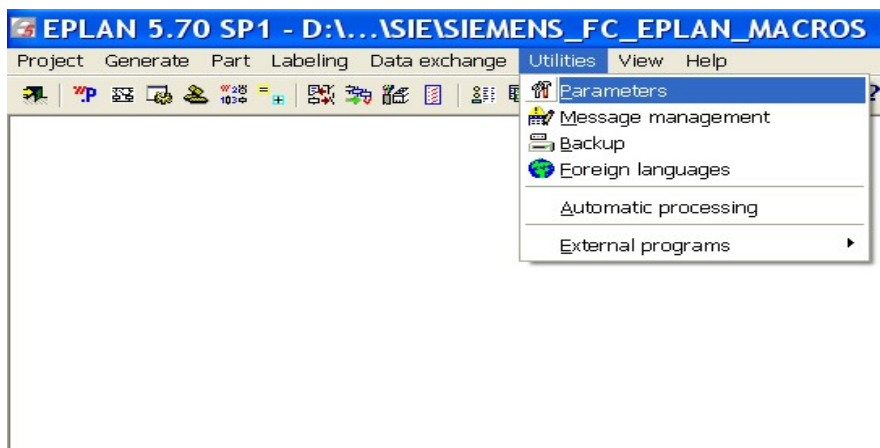
The Installation is completed.

3.3 Configuration:

EPLAN Parameters

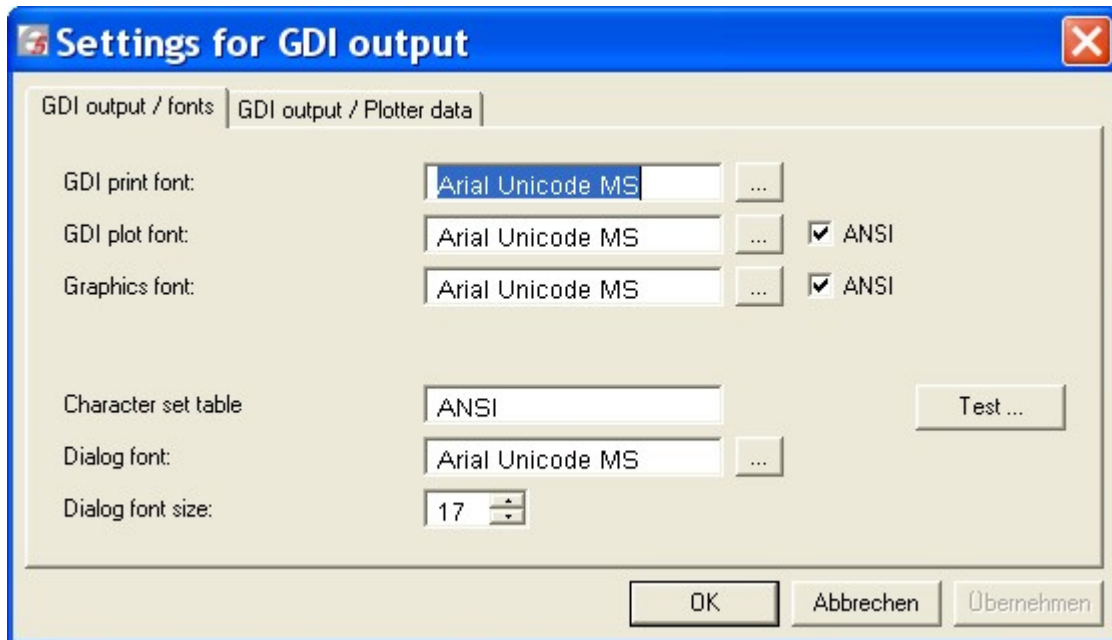
The following EPLAN settings are recommended for the graphical presentation of the texts.

Utilities > Parameters



Workstation > GDI-output format



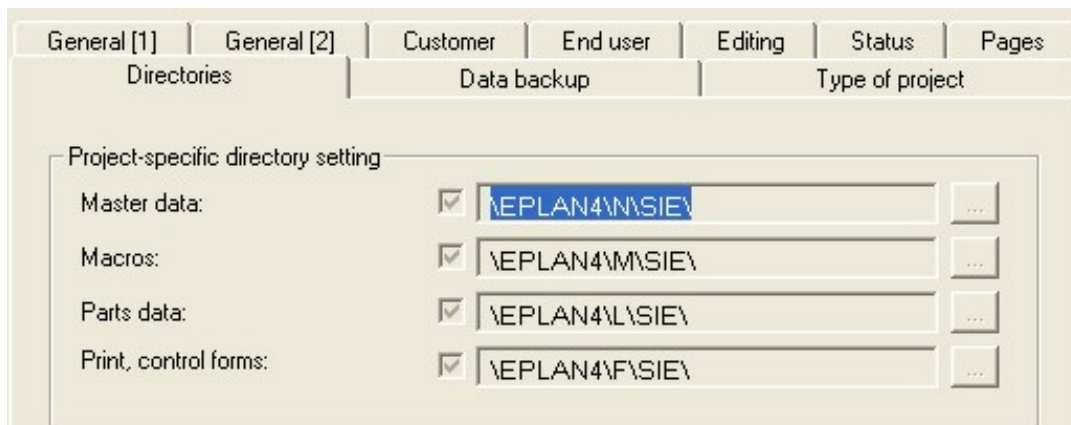


3.4 EPLAN Project: SIEMENS_FC_EPLAN_MACROS:

The project contains the schematic pages of the macros and example schematic pages.

The macros are generated from these pages.

The project uses this specific directory settings.

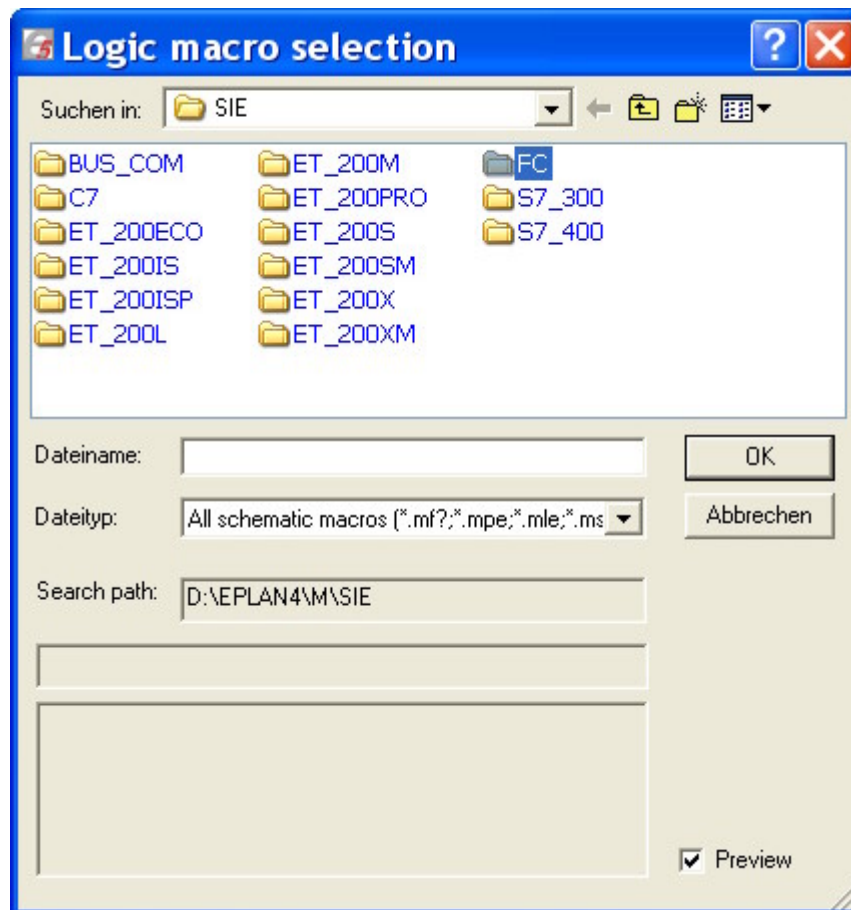


4 Operation instruction

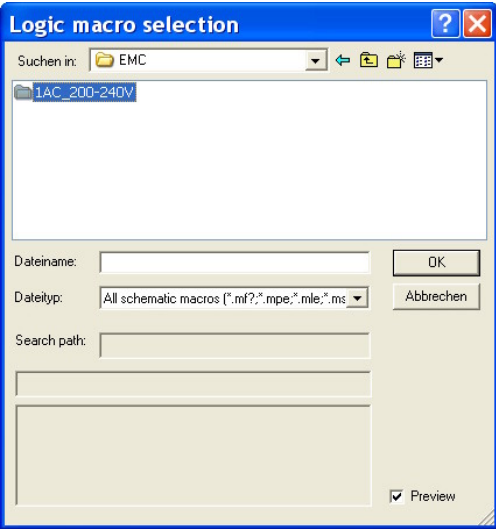
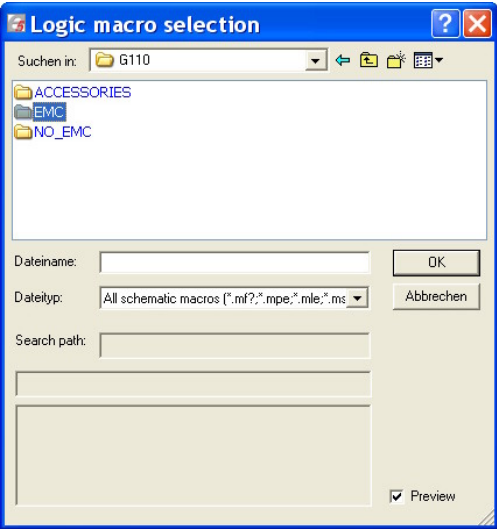
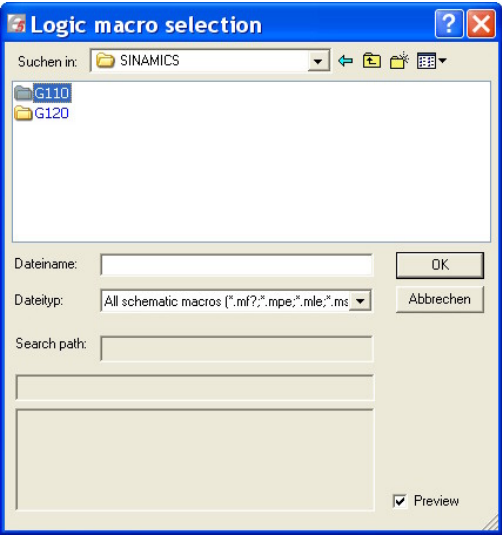
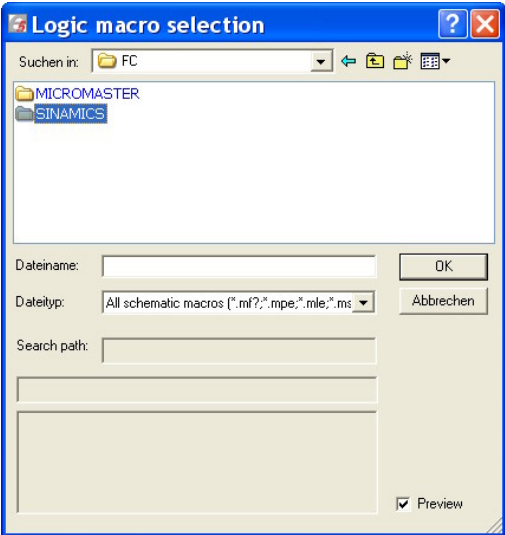
4.1 Inserting macros

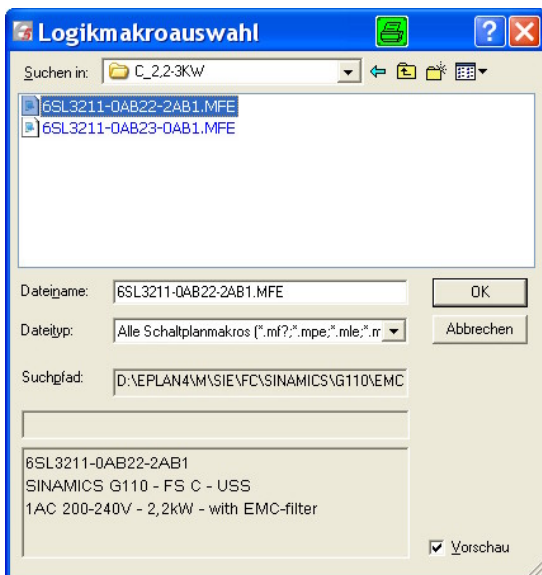
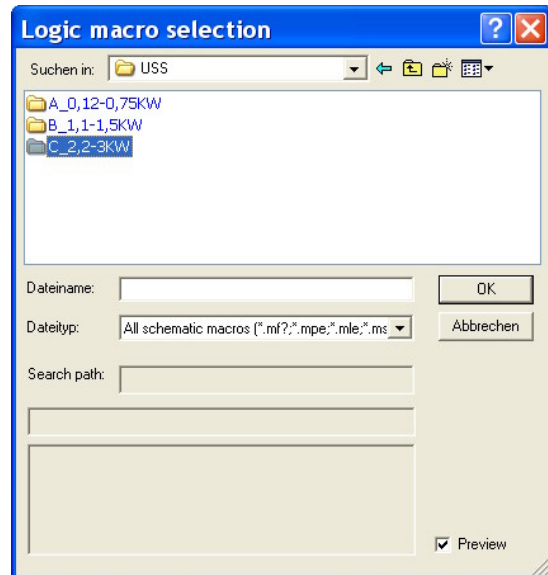
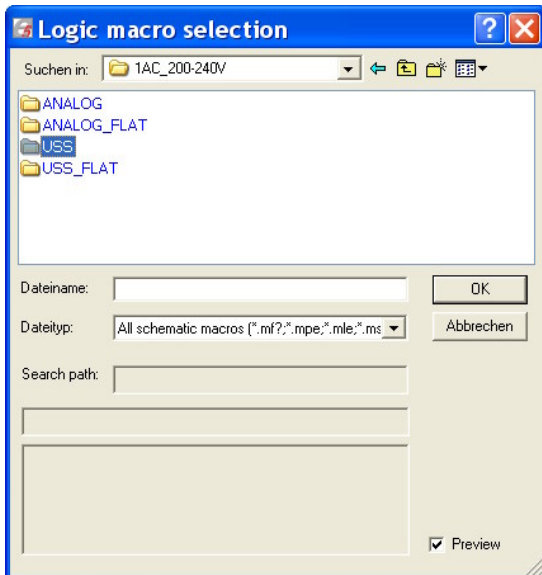
You select the EPLAN project and open the circuit diagram:

Use the command “insert Macro, change the directory ..\FC and select the SIEMENS product macros.



Change to the directory MICROMASTER or SINAMICS ...





Preview D:\EPLAN4\MSIE\FCSIN...

Left Diagram:

- Supply: L1, L2, PE (AC)
- Motor: SIEMENS SINAMICS G110 -FS C
- Motor Rating: 1AC 200-240V - 2.2kW
- Motor Model: 6SL3211-0AB22-2AB1
- Motor Terminals: U, V, W, PE

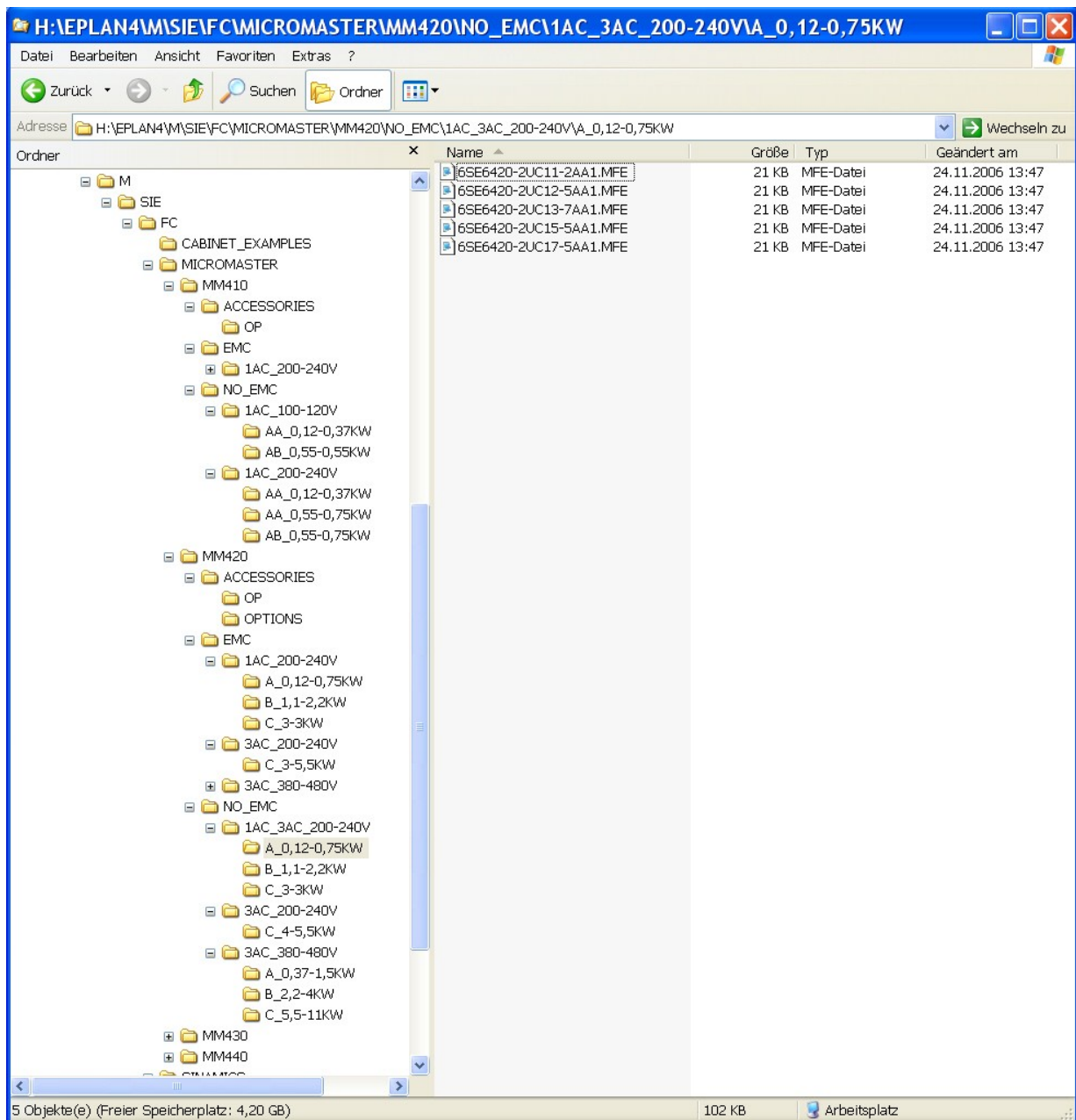
Right Diagram:

- Supply: DIN0, DIN1, DIN2 (AC)
- Motor: SIEMENS SINAMICS G110 -FS C
- Motor Rating: 1AC 200-240V - 2.2kW
- Motor Model: 6SL3211-0AB22-2AB1
- Motor Terminals: U, V, W, PE

20

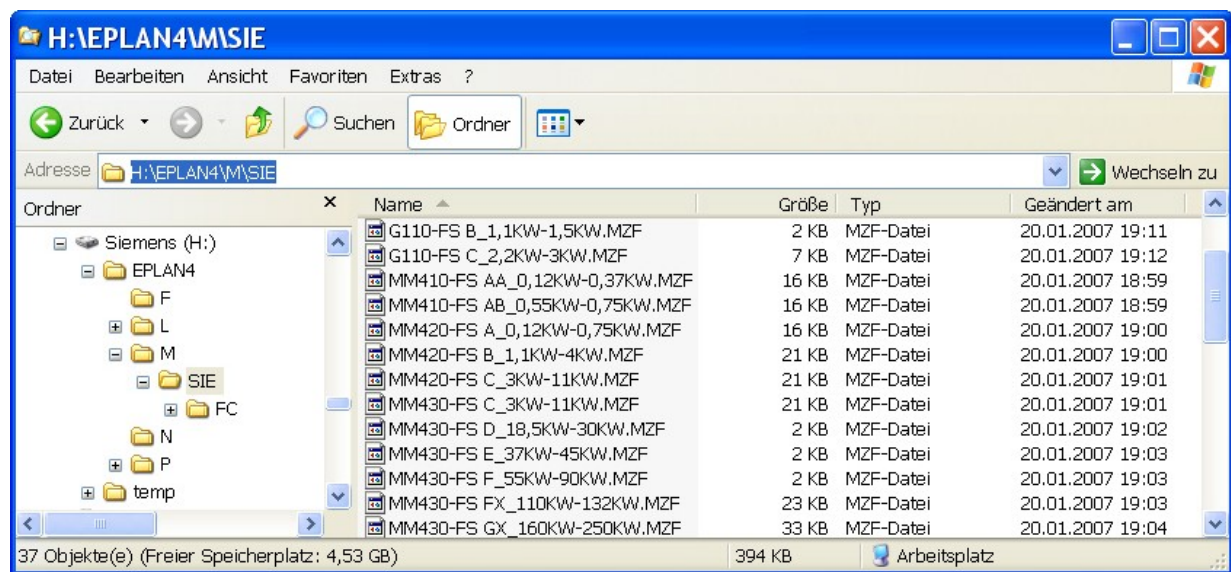
4.2 Macro structure

Please find the macro in this structure.



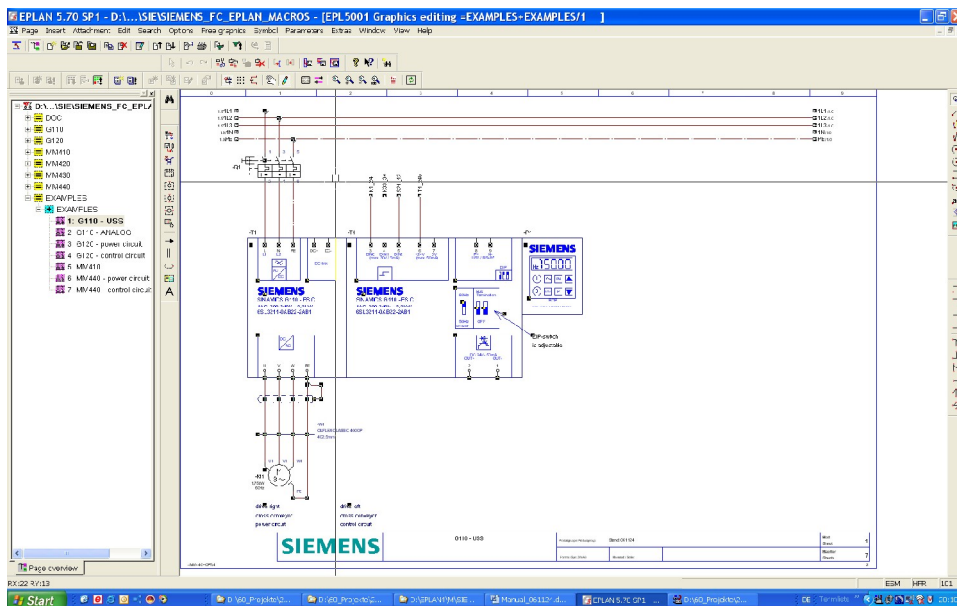
4.3 Macro structure cabinet

Look for the special mzf-macros in the directory Eplan4M\KdK



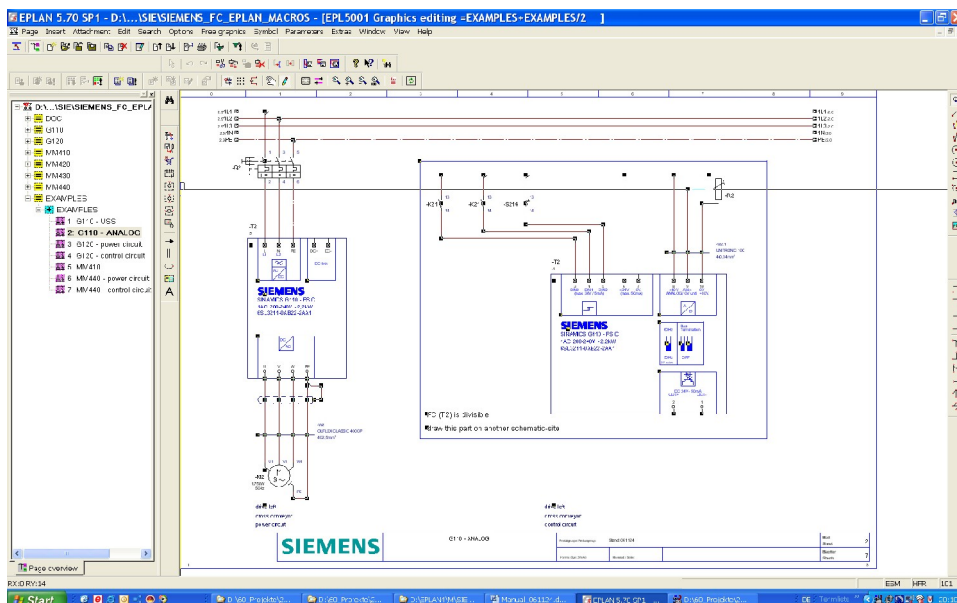
4.4 Workflow

In EPLAN the Basic Operator Panel will be placed next to the frequency converter.



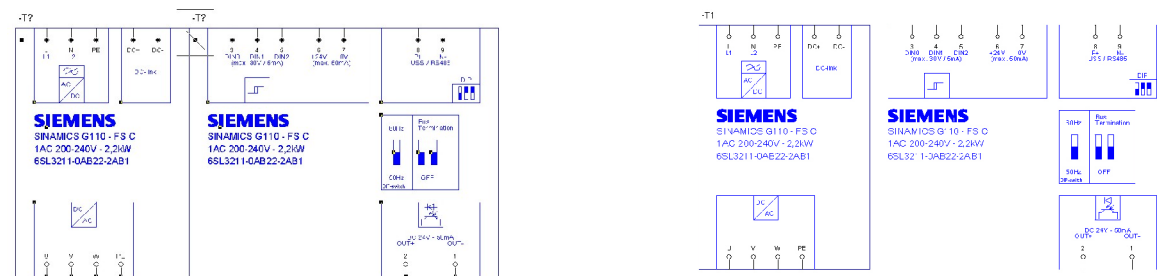
The macros consist of main and auxiliary element.

If necessary, you can paste the auxiliary element and insert this element on another page.

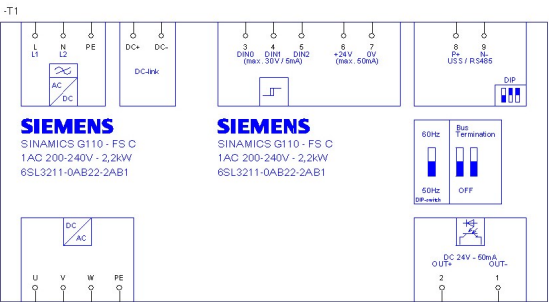


Assembly the macro.

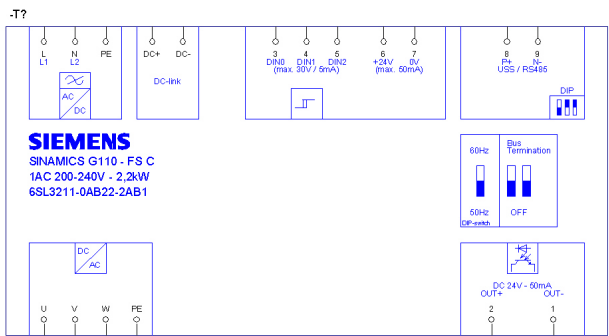
Step 1: Delete insertion point of the black box



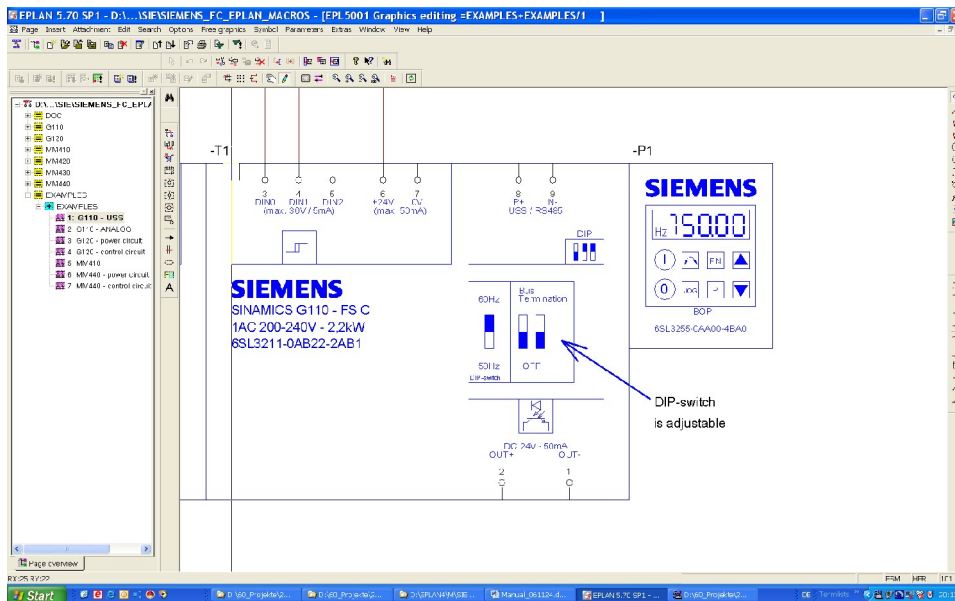
Step 2: Click right mouse button to change size black box.



Step 3: Delete SIEMENS-Logo and technical information



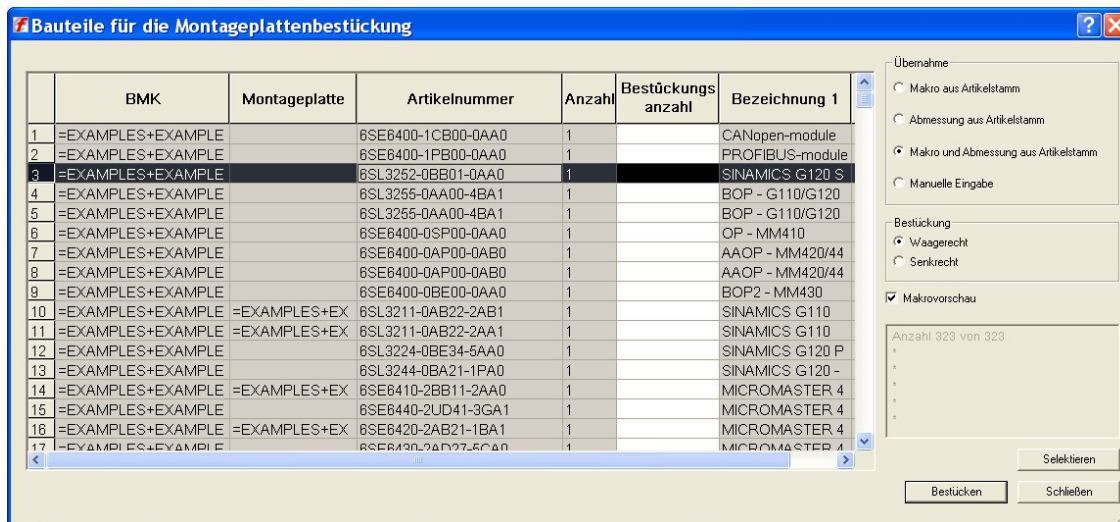
The DIP-Switch of the macro is adjustable.



Please find more examples in the EPLAN project SIEMENS_FC_EPLAN_MACROS

4.5 Mounting panels equip

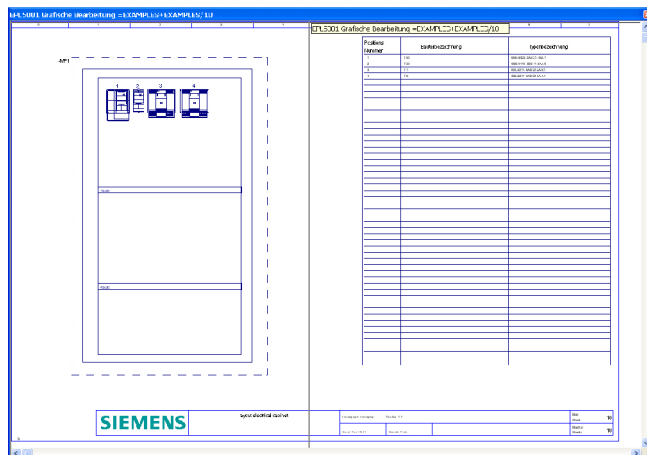
The name of the graphic macro is listed in the part database.
Please use following adjustment.



Insert the window legend.

This legend show the positionnumber, the device designation and the type designation.

The mounting clearance width and heighth may be different. Please use the values as per catalog.



For more information:

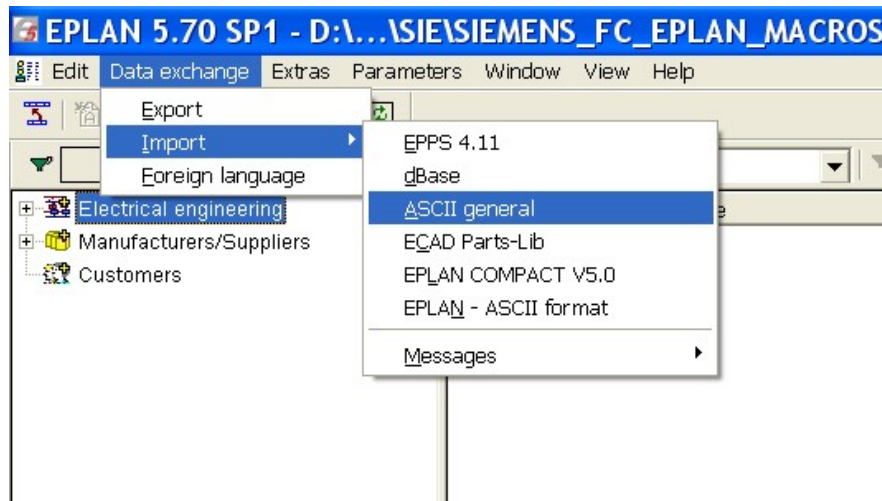
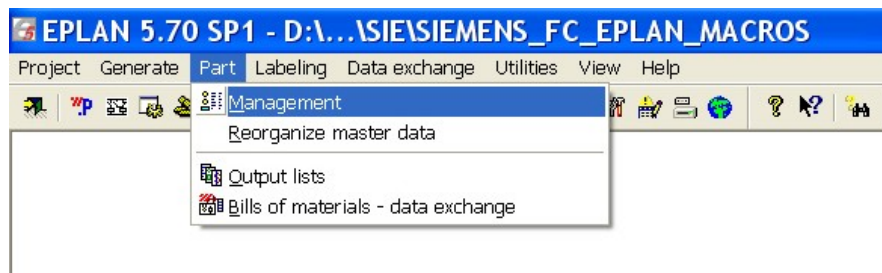
EPLAN Online-help

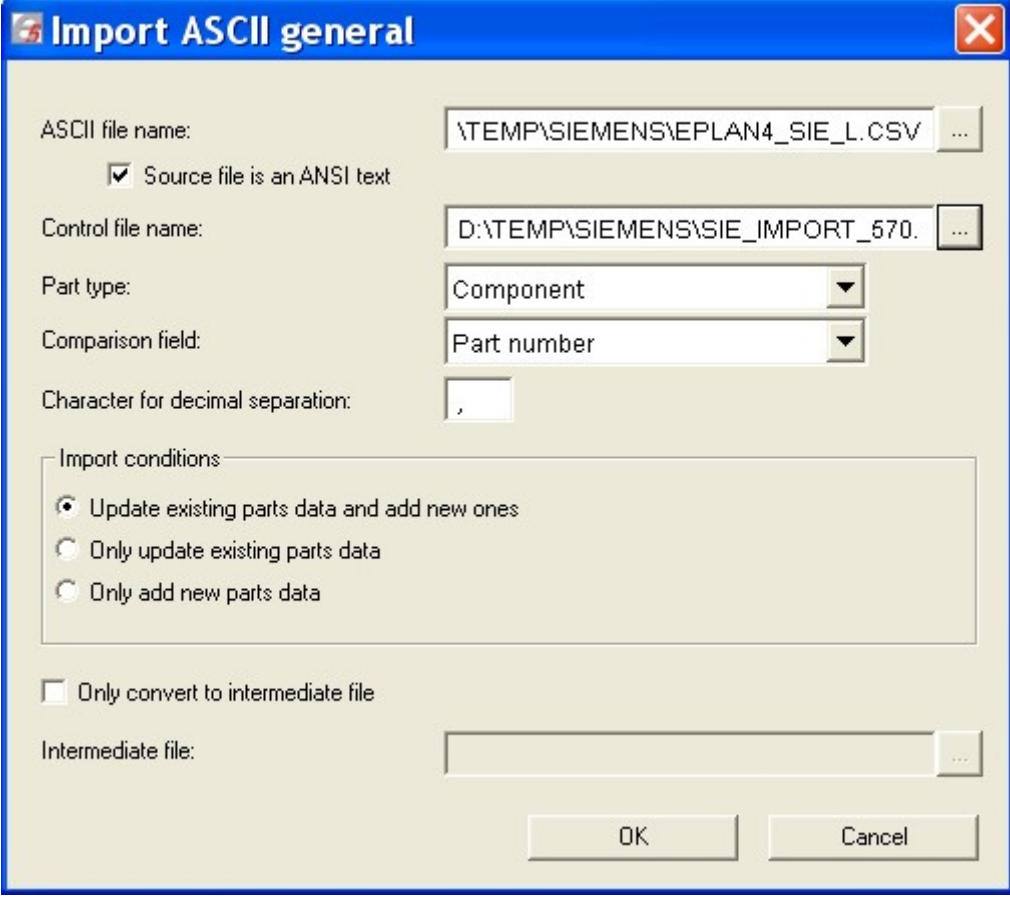
4.6 Revision of the article databases before importing

The neutral files - one Excel file and one CSV file - are copied in the temporary directory.

The user can change now the original item number with the company item number.

Use the import function “ASCII general” with the control file name „SIE_import_570”.STD





The image shows a Windows-style dialog box titled "Import ASCII general". It contains several input fields and options for importing ASCII data. The "ASCII file name" field is set to "\TEMP\SIEMENS\EPLAN4_SIE_L.CSV". The "Control file name" field is set to "D:\TEMP\SIEMENS\SIE_IMPORT_570.". The "Part type" dropdown is set to "Component", and the "Comparison field" dropdown is set to "Part number". The "Character for decimal separation" field contains a comma. Under the "Import conditions" section, the radio button "Update existing parts data and add new ones" is selected. The checkbox "Only convert to intermediate file" is unchecked. The "Intermediate file" field is empty. At the bottom, there are "OK" and "Cancel" buttons.

Import ASCII general

ASCII file name: \TEMP\SIEMENS\EPLAN4_SIE_L.CSV ...

☒ Source file is an ANSI text

Control file name: D:\TEMP\SIEMENS\SIE_IMPORT_570. ...

Part type: Component

Comparison field: Part number

Character for decimal separation: ,

Import conditions

- ☒ Update existing parts data and add new ones
- ☐ Only update existing parts data
- ☐ Only add new parts data

☐ Only convert to intermediate file

Intermediate file: ...

OK Cancel

After having inserted the macro, you have to change the original item number with the company item number.